

# Condo Jardin del Almendro

PUERTO VALLARTA RENTAL

Jardin del Almendro (Garden of the Almond Tree) is the largest and most unique of the 2 bedroom, 2 1/2...



## Sale Price

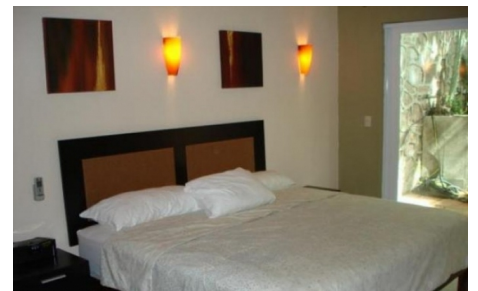
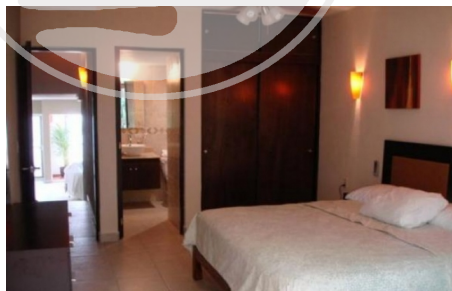
## Rental Price

|              |       |
|--------------|-------|
| Bedrooms     | 2     |
| Sleeps       | 4     |
| Bathrooms    | 3     |
| ID           | 113   |
| Type         | Condo |
| Land         | 0m2   |
| Construction | 0m2   |

## Appliances & Amenities

Furnished: Yes  
View: City, Ocean, Pool, Mountain, Street, Garden  
Pool: Common  
Appliances: Cable, Hood Fan, Range, AC  
RoomTypes: Dining, Living  
LaundryType: Private  
NearbySchool:  
SecurityType: Gate

## Contacts



This unit has 2200 square feet, of beautifully appointed space.

Including a rooftop dipping pool and teraza bar (complete with restroom/changing room) ,and ocean views. The spaces include a frontterrace for sunning or enjoying morning coffee, a private patio andprofessionally landscaped romantic garden in the back. By opening thedoors in the rear, front and atrium, a lovely breeze flows year roundso one rarely needs the 3 individually remote-controlled min-split airconditioners but they are there for your convenience.



**LUXURY BEACH®**  
FINE BEACH ESTATES

[www.luxurybeach.com](http://www.luxurybeach.com)

Tel + 52 322 221 3581 / 91  
Fax + 52 322 221 3580  
US/CAN (213) 797 4402

[info@luxurybeach.com](mailto:info@luxurybeach.com)

Francisco Medina Ascencio # 2485,  
Plaza Peninsula Local F-2,  
Zona Hotelera Norte, CP/ZIP 48333,  
Puerto Vallarta, Jalisco, Mexico.